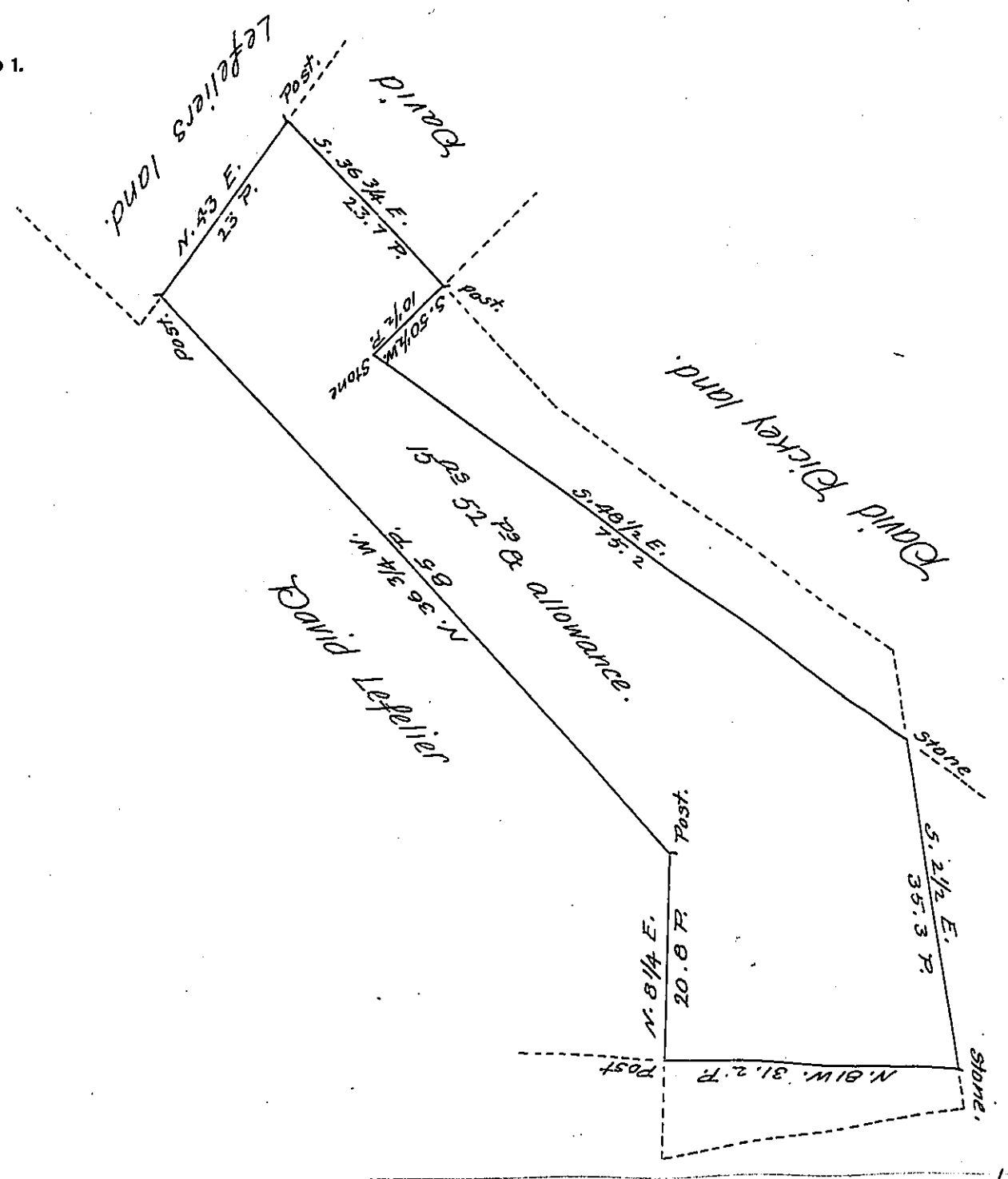


FORM NO 1.



The above Draught represents a Tract of Land Thomas Alexanders Land.
 Situate in Lower Oxford Township Chester County containing fifteen acres & fifty
two perches & allowance of six per cent &c. Being a part of a Tract of 15 3/4 acres
& allowance which was surveyed to Thomas Wallace on his Warrant on 7th of December
1747 Surveyed August 5th 1825.

Dr. Arthur Andrews, Jr. D.S.

Gabriel Hiester, Jr. Esqr.
Surveyor General.

Two Warrants of the 7th December 1747.

IN TESTIMONY that the above is a copy of the original remaining on file in
 the Department of Internal Affairs of Pennsylvania, made
 conformably to an Act of Assembly approved the 16th day of
 February, 1833, I have hereunto set my Hand and caused
 the Seal of said Department to be affixed at Harrisburg,
 this fourth day of June 1907

Henry Houck,
 Secretary of Internal Affairs.